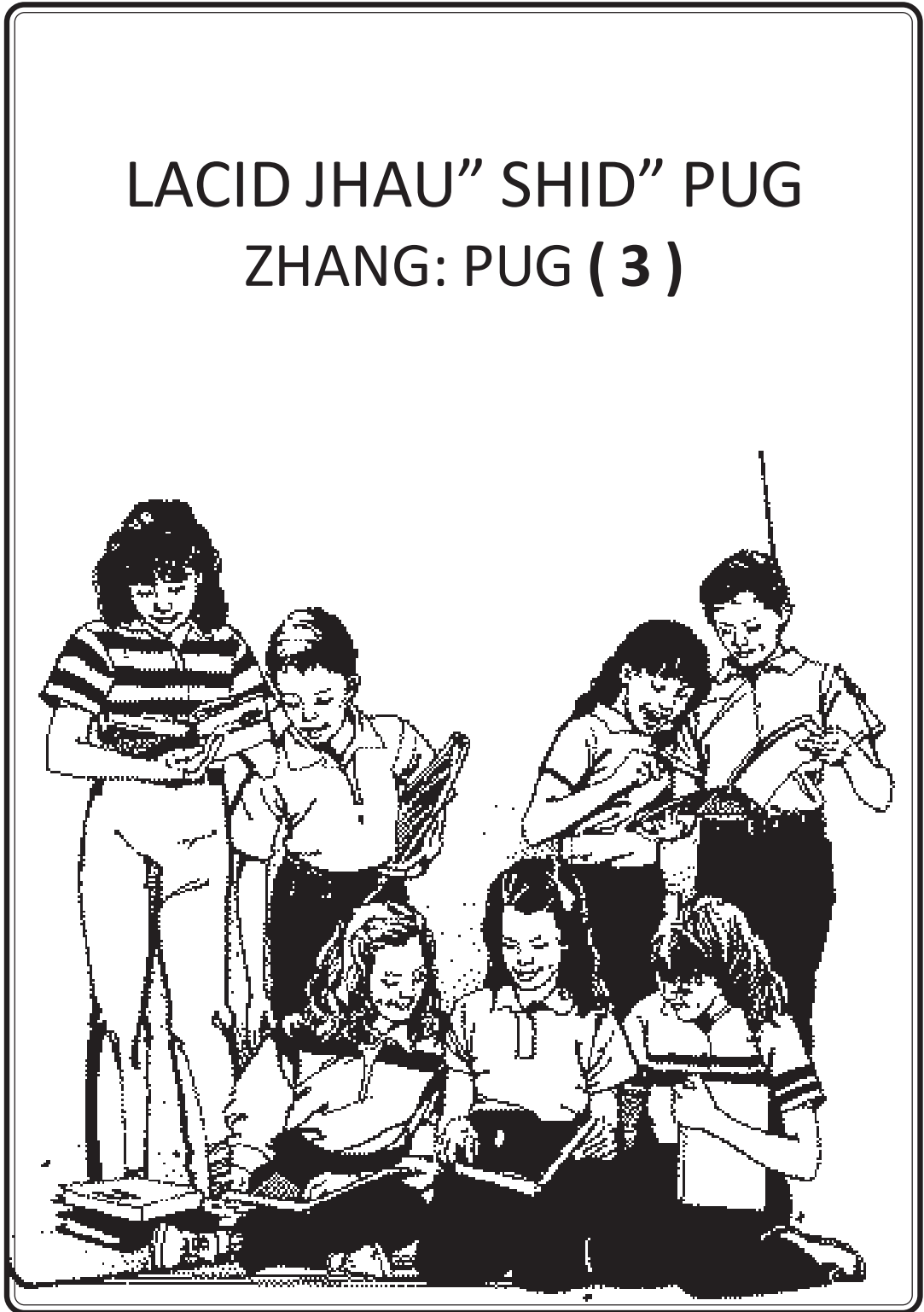


LACID JHAU" SHID" PUG
ZHANG: PUG (3)



AKHYOO" SHID

AKHYOO" AGAIN	SOUGCAB	SOUGMYO,	
15. ZHANG: BEING: (28)	Th th		1
16. ZHANG: BEING: (29)	K k		5
17. ZHANG: BEING: (30)	J j		9
18. PUG ZHANG: BEING:			12
1. ZHANG: BEING: 31	Gy gy My my Ky ky		16
2. ZHANG: BEING: 32	Khy khy By by		20
3. ZHANG: BEING: 33	H h		23
4. ZHANG: BEING: 34	C _n		26
5. ZHANG: BEING: 35	V v		29
6. PUG ZHANG: BEING: (31 - 35)			32
7. ZHANG: BEING: 36	Oe oe _b		36
8. ZHANG: BEING: 37	Au au		39
9. ZHANG: BEING: 38	Ngh ngh Yh yh Lh lh		42
10. ZHANG: BEING: 39	Jh jh Nh nh Myh myh		46
11. ZHANG: BEING: 40	Nyh nyh Vh vh		50
12. PUG ZHANG: BEING: (36 - 40)			53
13. ZHANG: BEING: 41	Zh zh Mh mh		58
14. ZHANG: BEING: 42	P p Py py		62
15. ZHANG: BEING: 43	Ph ph Phy phy		65
16. ZHANG: BEING: 44	X x ue		69
17. ZHANG: BEING: 45	Ua ua		72
18. PUG ZHANG: BEING: (41 - 45)			76
19. ZHANG: BEING: 46	Ui ui		80
20. ZHANG: BEING: 47	W w		83
21. ZHANG: BEING: 48	F f		88
22. ZHANG: BEING: 49	R r Rh rh		94
23. ZHANG: BEING: 50	Q q		99
24. PUG ZHANG: BEING: (46 - 50)			101

ZHANG: BEING: (28)

Th	th
----	----

1. Ayam mo lhid'' cab yo' du go'' da''- yab kyo' khau: mo lhid'' cab ri khyeung'' lheung byid: we'.

Th	Th	Lh	Nh	Th	Lh	Th	Nh	Mh	Hh
th	lh	hf	th	jh	lt	th	lh	th	ht

2. Myookhyoo'' tho' moo lhid'' cab ri joo sho' lhid'' zhang: we'.

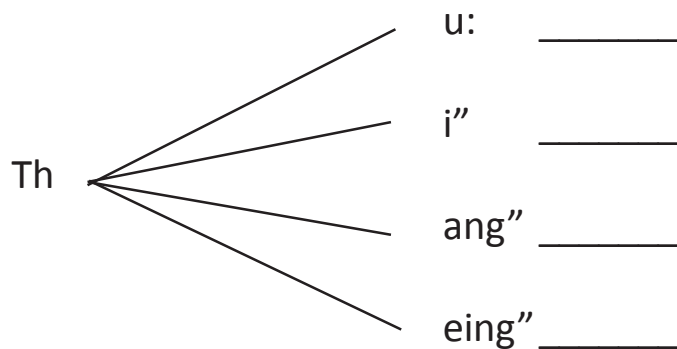
Th

th

Theing''

theing''

3. Lhid'' cab ri zhoem: lho: myookhyoo'' tho' moo lhid''
kaid we'.



4. Myid: thung yab mo soug'' cab joem ri dang: kang: bo
da'' soug'' jen bui'' sho' sho: xo' lho: lhid'' we'.

Thang'' kho'/ loo: lo./ Thung: moo/ moo shi'' bo./
thoid wa la''./ Yang: thang moo/ moo'' yo''./
Oug'' ri/ Moid thi''/ bo da'' zi.

- 1.
- 2.
- 3.
- 4.
- 5.

5. Soug'' jen gyoo: mo myookhyoo'' tho' moo loseung''
khuang shid'' khuang myhid'' khau: mo soug'' cab ri khying:
kaid we'.

1. Yang _____ moo loo: lo.

(goo''/ thang:/ da)

2. Moid _____ moo shi'' bo.

(seig/ soo''/ thi'')

3. _____ kho' wa moo'' yo'' to''.

(Thang''/ Leing/ Zeing)

4. _____ moo: bo da'' zi yoo.

(Thung/ Thung:/ Thung'')

5. Oug'' ri _____ wa la''.

(thui:/ thi''/ thoid)

6. Soug" jen mo myookhyoo" moo ca" nyid" da" soug"
cab ri khyeung" lheung to" da" soug" cab mo khying: kaid
we'.

(Thu) (thang") (atho') (theing") (Thang:) (thoo:)

1. Thang" shoo: lang" _____ yo".

2. Nya: da" _____ yu lo yu" ge'.

3. _____ lo da" su: mang: moo" ga:.

4. Mi thu: ri lo, yo' _____ dang.

5. _____ thang moo shi" gam noid to".

6. Da _____ dabo mang" ri eig thoo: ga:.

7. Lhid" to" da" soug" jen joem ri apug pug nghab zhang:
we'.

Nga" mang: thang" kho' da" zi yu" shang. Nyang:
moug thung: mo moug lab thoid lo da. Ngoo thang" bo
kho' ba. Thung: thi" mo thu lo da" moug yi ri ngoo yu ba.
Thang: mo bang: ri athang: teing too" we' ga:.

ZHANG: BEING: (29)

K	k
---	---

1. Khyeung" lheung to" da" soug" cab yo' du go" ziri sho:
lho: khyeung" xo' byid: we'.

kid" kaid dei keig

a	f	d"	e	b	i	u
g	i	r	k	e	i	g
k	a	i	d	h	d	e

2. Dashoid yo' dashoid mo soug" jen zhung" go" zigi joo
sho' khyeung" xo' byid: we'.

Kaid to" zi apei: yu" goo".

Shoo" keig ri moug we' bo.

Akoid ziri alab thoid.

Kid" mo lo atid goo".

3. Myookhyoo" moo soug" cab ri joo sho' lhid" zhang: we'.

Keing"

keing"

kaid

kid

keig

4. Soug" jen ri nghab lho: myookhyoo" tho' moo doem
lhid" zhang: we'.

Kaid to" zi yu zo: _____.

Kid" mo moug yu lo. _____.

Keig to" shoo" keig. _____.

Kaid wa la" akaid wa la". _____.

5. Soug" jen gyoo: mo myookhyoo" tho' moo loseung"
khuang shid" khuang myhid" khau: mo soug" cab ri
khyeung" kaid we'.

1. Thug keing" moo shi" yeing _____ to".
(to"/ lang"/ kaid)

2. Khu mo shoo" yeing _____ dang loo ge'.
(kaid/ laid/ yang)

3. _____ to" zoo keig ri pei: zoo: wa.
(Leig/ Beig/ Keig)

4. Mougsoug" anoug si lang" _____ yo' du.
(foin" su:/ koo" doug:/ yeig su:)

5. Yoo _____ loo" lang" ngoo yo' loo" shang.
(tid/ myang/ khid)

6. Sham: gi ga: zigi _____ bo da" sham: ri tid.
(kang"/ sang"/ mang")

6. Myid: thung yab moo **keing" soolhoo:** ri sue" we'.



7. Soug" jen joem ri apug pug nghab zhang: we'.

Keing" yo" la".

Keing" ri khu' ga: we' tid.

Keing" moo shi" yeing kaid to" ga:.

Keing" ri kid" moo we' oung" to" ga: tid da:.

Keing" moo shoo" yeing" kaid shug rigi agi la".

Keig to" zookeig yu zoo: wa ga: tid kaid da:.

ZHANG: BEING: (30)

J j

1. Myookhyoo" tho' moo lhid" cab ri joo sho' lhid" zhang: we'.

J

j

Jang

jang

2. Myid: thung yab moo **jang** soolhoo: ri sue" we'.



3. Da shoid yo' da shoid zhung" go" da" soug" jen joem ri joo sho' khying: xo' byid: we'.

Jang moo zi mougsoug" se'.

Jung do, lang" jag asaid too".

Baid jin" wa leig yu" shang.

Moo: doo: mo du: yu ri" we'.

4. Aphyi: asain" bue" jo, da" lhid" cab joem ri soug" cab bui" sho' sho: zhoem: lo: dashoid mo khyeung" kyo' yab moo lhid" we'.

J a ng oo nu: d

ng u mi m" oi d

J ri oe J a g

nu" J da lo, ei ny

5. Soug" jen gyoo: mo myookhyoo" tho' moo loseung"
khuang shid" khuang myhid" khau: mo joo sho' khyen:
kaid we'.

1. Jung zoo: yi _____ moo ju" sho' lo" nyid.
(to"/ lang"/ jung)

2. Kid" mo jang lug laki' _____ joo ajoo yu" yu" ge'.
(jang/ laid/ yang)

3. Ju" da" _____ moo nyid gi sho' koid ge'.
(joyoo/ beig/ Keig)

4. Jung anoug do, lang" _____ bue" lo.
(koo" su:/ Jung/ yeig su:)

5. Moo: doo: mo _____ asaid too" da.
(tid/ jag/ khid)

6. Seig gam _____ lo da: ga:.
(kang"/ sang"/ jeing")

PUG ZHANG: BEING: (25 - 30)

Jhau" loo bye: da" soug" poem: joem gi he:
gu: anghoid la".

Myhi' yang:

Ng ng	G g	Th th
K k	J j	

1. Lhid" to" da" dang: thug soug" cab ri xoem" sho' nghab
zhang: ge'.

zi	Age da" zi age tid.
lhe"	Age khau" lhe".
yi	Zooshang: yi gei yin" ago".
rigi	Jung do, rigi mougsoug" se'.
riza:	Yang riza: tei" too" we'.

2. Lhid" to" da" soug cab joem ri soug" jen moo joo sho' khyen: kaid we'.

Ngei/ Keing" / jung/ Jang/ gug/ kaid/ thung"

_____ shoo: loo" lang" dage" loo" shang.

_____ yo' shoo" yeing lo" _____ dang loo we'.

Mougsoug" si sho' _____ do, ge'.

_____ yo' shoo" leig oung".

Jung zoo: yi bolung" _____ nyid.

Dang: mo _____ kaid dang loo we'.

Lo, moo kha: ja: _____ nghoid la".

3. Lhid" to" da" soug cab yo' du go" ziri sho: lho: khyeung" xo' byid: we'.

keing" jang gug theing" ngei

k	ei	ng"	ei	b	i	u
ng	ei	r	k	g	u	g
th	a	j	a	ng	d	e

4. Asoo" 1 mo 5 ju" sho' da" soug" jen moo ca" nyid da"
lhid" cab ri lo, seung" khuang shid" khuang myhid" khau:
mo joo sho' khyen: kaid we'.

1. Sham: zain _____ to" da.

(goo"/ goid" / da)

2. _____ da" zi ri sbo yu" too" we'.

(Seig/ Soo"/ Nga")

3. Thug _____ ri yu shung: too" we'.

(lid:/ keing"/ zeing)

4. Oug" _____ mo moid ke" to".

(tho'/ tei"/ doo")

5. _____ lug laki ga: zi se' la".

(Moid/ Jang/ Lo,).

5. Myid: thung yab khau: moo myeung yo' zhung" da"
soolhoo: sue" we'.

Gug



Theing"



Keung"



Jang



6. Dashoid yo' dashoid zhung" go" da" soug" jen ri
khyeung" xo' byid: we'

Khu soo" gi

Ngo, gam

Thang" shoo: bang

Shoo" said bang:

Kid" oung" jang:

thang" she: lo.

kid" zi ke".

go, lei da:.

ayeing" shi" da.

shoo" kang: zo:.

ZHANG: ZOO" (31)

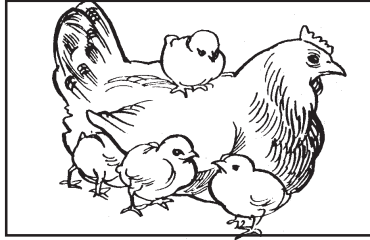
Gy	gy	My	my	Ky	ky
----	----	----	----	----	----

1. Ayam mo lhid" cab yo' du go" da" - yab kyo' khoug: mo lhid" cab ri khyeung" lheung byid: we'.

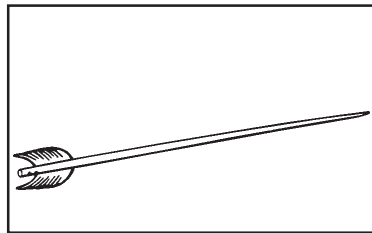
Gy	By	GP	Gy	Gj	Gy	By	Gy	Gy	Gj
My	Ny	My	Ny	My	Gy	My	By	Ny	Uy
Ky	Ky	By	Ky	Py	Hy	Ky	Zy	Xy	Ky

2. Dashoid yo' dashoid mo chung" go" da" soug" jen ri joo sho' khyeung" xo' byid: we'.

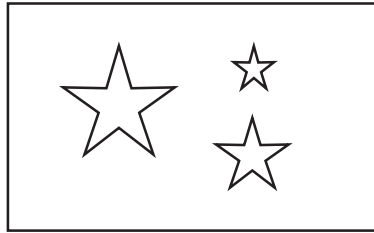
Boo" kyi: ri	bang sho' koid we'.
Nang we' kyi: su"	ngaid zo: da:.
Gyo, zeing mo	moug: boo" kyi: ga:.
Myin" ri	gyo, u yo".
Gyo, ri gyung	kyi: thu bang.



3. Soug" jen joem ri apug pug nhab zhang: we'.
Gyo, zeing dadu:.
Gyo, zeing gyo, zoo: shu" da.
Gyo, gyeung" khu: to" la".
Gyo, zoo: yiri gyo, zeung bid shu" gang nyid.
Gyo, nu" gye" yang" da.



4. Soug" jen joem ri apug pug nhab zhang: we'.
Myoo: shab to".
Lid: dung" moo myoo: kaid to".
Myoo: ri gi sho' koid to" we' ga: tid.
Myoo: adu lang" tu' jang" moo azang" ga:.
Myono, tab da" myoo: ri gye zid" shang ga:.



5. Soug" jen joem ri apug pug nghab zhang: we'.
 Kyi: zeing bang jo,.
 Moug: boo" kyi: ri yu" ge'.
 Boo" kyi: ri moug: boo" kyi: ga:.
 Oung: doid bang: ri kyi: yo' tu to" ago".
 Nang we' kyi: su" bang sho' koid nyid we'.

6. Lhid" to" da" soug" cab yo' du go" ziri sho: lho:
 khyeung" xo' byid: we'.

gyung kyi: myoo: myang kyang

my	a	ng	e	b	i:	u
g	u	r	oo:	ky	a	ng
gy	a	my	oo	h	d	e

7. Myookhyoo" tho' moo soug" cab ri joo sho' lhid" zhang:
we'.

Gyo,

gyo,

Myoo:

myoo:

Kyi:

kyi:

ZHANG: ZOO" (32)

Khy khy By by

1. Ayam mo lhid" cab yo' du go" da"- yab kyo' khoug: mo lhid" cab ri khyeung" lheung byid: we'.

Khy	Khy	khy	Khy	Kyh	khy	Kyh	Khy
by	bq	dy	by	dy	bq	dy	by

2. Myookhyoo" tho' moo soug" cab ri joo sho' lhid" zhang: we'.

Khyug

khyug

Byi:

byi:

3. Lhid" to" da" soug" cab ri soug" jen mo myookhyoo"
tho' moo joo sho' khyen: kaid we'.

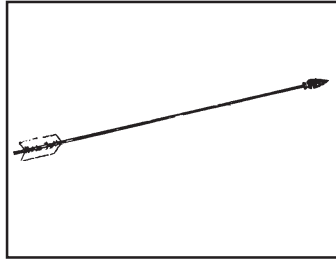
khyung"	khyang:	ca"	kyang:
byug	Byi:	Byeung	byeug
Byoo:	khyoo:		

1. Khung: moo _____ ke" to".
2. Zeing yo' mang" yu ri" _____.
3. Shi" _____ zeing yu ri" we'.
4. Seig _____ baid khyoug" kaid we'.
5. _____ sheing: yo" to" la".
6. _____ myug ri gye no.
7. Nga" byi: _____ zi myang.
8. Lamei yoo moo gyo, _____ ri agi.
9. _____ zei: jo, ziri athoug" goo".
10. Meing: _____ agung khyo" age soo".

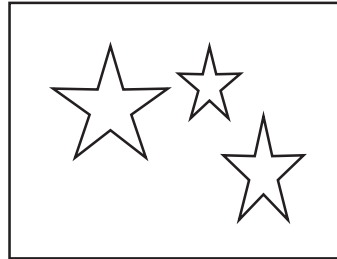
4. Soolhoo: vho: mo myookhyoo" tho' moo soolhoo:
 myeing bui" sho' lhid" we.



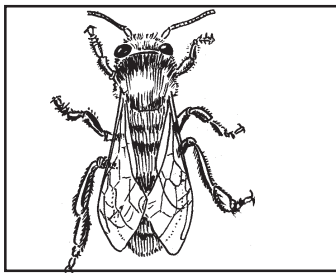
_____ug



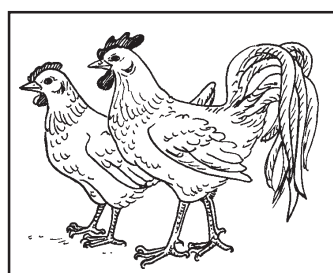
My_____



_____i:



B_____:



_____o,

5. Lhid" to" da" soug" jen joem ri apug pug nghab zhang:
 we'.

Khyug nyid" nyid" ri byi: re" yu we'. Nang re"
 uri khyoo: moo byoo: azei: jo, la' yu" ri" we'.
 Byoo: ze: jo, lang" azang" thoug" shi". Byoo:
 khyung: ri we' bo yu" loo we'.

ZHANG: ZOO" (33)

H	h
---	---

1. Ayam mo lhid" cab yo' du go" da" - yab kyo' khoug: mo lhid" cab ri khyeung" lheung byid: we'.

H	K	H	R	H	Y	B	H	
h	k	t	h	n	h	h	m	

2. Myookhyoo" moo lhid" cab ri joo sho' lhid" zhang: we'.

H

h

Hang"

hang"

3. Lhid'' to'' da'' soug'' cab ri myookhyoo'' tho' moo joo sho' khyen: kaid we'.

hang'' Hid: He: Hei' hei:

1. He du: _____ da'' nu: nghoid la'.
2. _____ moo hang'' ju'' re''.
3. _____ gu: riza: yu loo'' ca'' ga:.
4. _____ da'' byi: ri yu loo we'.
5. Mid: _____ ga: zigi byid: go'' gam go'' zi nghoid.

4. Lhid'' to'' da'' soug'' cab yo' du go'' ziri sho: lho: khyeung'' xo' byid: we'.

hei: hang'' hei' hug

h	ei'	d''	e	b	i	u
g	a	r	k	h	u	g
k	a	ng''	d	h	ei:	e

5. Myookhyoo" tho' moo khuang shid" khuang myhid"
khoug: mo joo sho' khyen: kaid we'.

1. ___ su" ga: hang" tid.
(Goo"/ Hid: / Da)

2. _____ su" koid we'.
(Seig/ Soo"/ Hug)

3. Byi: _____ bye: la'.
(lid:/ leing/ hei')

4. Nug kyug heing" _____ nam.
(so"/ heing"/ doo")

5. Banoug he" _____ ga: nam.
(he"/ do,/ lo,)

6. Lhid" to" da" soug" jen joem ri apug pug nghab zhang:
we'.

Hug mo shi" hang" yu zo:. He: shi" heing" heing"
nam bye:.. Hid: su" nam da" shi" ri age zoo:.. Hi" bye: da"
banau ri gyid yeing moo akaid. Hang" we' ayo" shug ga:.

ZHANG: ZOO" (34)

C	_n
---	----

1. Myookhyoo" tho' moo lhid" cab ri joo sho' lhid" zhang:
we'.

C

c

n

Cen:

cen

2. Myookhyoo" tho' moo khuang shid" khuang myhid"
khoug: mo joo sho' khyen: kaid we'.

1. _____ ri gug mo yo".
(Goo"/ Cen: / Da)

2. Cin: ri yung" yung" _____ we'.
(cid"/ soo"/ do")

3. Yung" da" cen: gu _____ myo:.
(lid:/ leing/ je)

4. Teing to" da" cen: yeing khu: _____ ri" we'.
(so"/ ci:/ doo")

5. Cen: gei: ri _____ yu lo.
(cikoid'/ do,/ lo,)

3. Lhid" to" da" soug" jing ri apug pug nghab zhang: we'.

Cen: gei: ri ci: ri" we'. Cen: dang: moo gyu khyid" ceig
ceig no, zi bo da. Gyo, zoo koid ri ge. Gug yoo moo cang" ko'
we' sho" to". Gug bain thung" lang" cen: ri yoo khyoo: ci: ri"
we'. Yoo nam moo cu" jo,. Cu" boug moo gung cid" shang.
Zooshang: yi acang' ri" goo".

4. Lhid'' to'' da'' soug'' cab yo' du go'' ziri sho: lho:
khyeung'' xo' byid: we'.

cid'' cen: co' cu'' cang'' ko'

c	f	n:	e	b	i	u
u''	i	r	k	c	i	d''
c	a	ng	k	o'	f	e

5. Vhoo: mo myid: thung yab moo cen: soolhoo: ri sue''
we'.



ZHANG: ZOO" (35)

V	v
---	---

1. Myookhyoo" tho' moo lhid" cab ri joo sho' lhid" zhang:
we'.

V

v

Vu,

2. Myookhyoo" tho' moo khuang shid" khuang myhid"
khoug: mo joo sho' khyen: kaid we'.

1. _____ shoo" ri athei" ge zoo: ga:
(Goo"/ Vu, / Da)

2. _____ bang: jo, ri kyang: nyid.
(Seig/ Soo"/ Voo:)

3. Byi: ri yung" yung" _____ ci: ca".
(void/ leing/ zeing)

4. _____ thug ri lo, ke' thug ca".
(So"/ Voo:/ Doo")

5. Zooshang: yi _____ khyoo: age lam".
(vi:/ do,/ lo,)

3. Dashoid yo' dashoid mo zhung" go" da" soug" jen ri joo
sho' khyeung" xo' we'.

Voo: dagam macid" thoug" we'.

Vu, soid moo thug ri" we'.

Vu, nu" ri gye" no da:.

Byeing voin" ri vu, zoo: nyid.

4. Lhid" to" da" soug" jen joem ri apug pug nhab zhang:
we'.

Vu, khu: shang. Vu, khu: ri akyu" bo. Vu, nyid da"
nam moo voobang age jo,. Voobang jo, lang" vu, ri kyang:
ngaid. Vu, sung ngam" lang" vu, keing: da:. Vu, zoo moo
cin: gei: kaid we'. Shivoo: khyam: moo vu, avang sho'
kyam' we'. Voogung khoug: moo vu, nyid yin" ri agi.

5. Soug" jen joem ri goolhoo' nhab lho: ca" nyid da" thui:
ri joo sho' kaid we'.

— " — ' — :

Vu, zeing dadu khu to. Vu zoo: we' myoo sho soid to".

Vu, nu ri lo yo yen yen kyen byid we. Yoo mo voomyeig
voin loo we'. Voomyeig ri vu, gye zo da. Vu zeing ri oung"
shang. Oung noug: loug nga" ba" myid aveing" nghoid da.

PUG ZHANG: ZOO" (31 - 35)

Jhau" loo bye: da" soug" poem: joem gi he: gu: anghoid la".

Myhi' yang:

Gy gy	My my	Ky ky
Khy khy	By by	H h
C c	V v	_n

1. Soug" jen ri alheung: lheung: nghab zhang: lho: dang:
thug ri vhoo: mo myookhyoo" tho' moo lhid" kaid we'.

je ca" moo shang da" su lang"

1. Nga" ba" gyo, khu: ga: _____.
2. Yoo moo ce: ja: _____ ziri lo" yu" we'.
3. Moug: boo" kyi: gi gootu: tho' _____ bang
da:.
4. Bu shi" gyoo" _____ koid: loo we'.
5. Gyo, yo' vu, ri khu: _____.



2. Dashoid yo' dashoid mo chung" go" da" soug" jen ri joo
sho' khyeung" xo' we'.

Mya-g: too: moo	kaid da-g loo we'.
Gyo, ri gyu-g	gye" -o.
Vu, soid moo	zi tho' loo we'.
Boo" kyi: ri	ashi: -ha-g: goo".
Kya-g moo shi"	moo gyu zoo: bo.
Gyu khyu-g: khoug:	moug: boo" kyi: ga:.
Byei-g myug ri	daja: -ghoid.
Ca-gko' gi macid"	vu, zoo: -yid.

3. Lhid" to" da" sougcab yo' du go" ziri sho: lho: khyeung"
xo' we'.

gyo,/myoo:/kyi:/khyug/byi:/hang"/cin:/vu,

ky	i:	n:	h	a	ng"	u
by	i	khy	u	g	oo:	gy
c	v	u,	d	my	d	o,



4. Soug" jen joem ri alheing: lheing: nghab zhang: we'.

Gyo, yo' vu, khu: ri akyu" bo. Nga" ba" bi" gyo, khu: to" da. Gyo, zeing gyo, u khyo' nyid da:. Gyo, soid koid byid: ge'. Gyo, nu" myoo" sho' myo: re" bye: ga:. Gyo, ri shi: zo: da" gyung dadu: re" da:. Gyo, zoo: myo, jid" kyi: kyi: bang. Gyung ri lid: yo' beig shang. Myoo: khyug khaid ci: ri" we'. Shoo" beug ri byi: no, void ca" ga:. Gyung dadu hang" to" da:. Gyung yo" beug yoomo gyung kheung" khyu: yin" da:. Gyung kheing" khyu ri" yomo cin: dabye: kaid kaid bye:.

5. Myid: to" da" dang: myid: ri lhid" sho' kyoo" we'.

1. Re" ba" ce: ja: khu: to" lha".
2. Gyo, u khyo' loyid ri cikoid byid: ca".
3. Gyo, ri ce: ja: shi: zo:.
4. Gyung ri ciyo' beig wa lha".
5. Gyung kheing" ciwim khyu: lha".

6. Soug" jen joem ri goolhoo' nghab lho: ca" nyid da" thui:
joem ri joo sho' kaid we'.

—” —’ —: —:

Dang khoug: mo cen: ri gyo, zo: nyid da.

Myoo koid da voo: gi voyang" nghoid ca.

Tungzo byumyu moo byukung: khyug ja bo.

Nga bi bi" Lacid byisheing: yo nyid da.

Sabe" shid moo agoin age hang" yen".

Gyo nu" ri cin sain" byid: kaid ge.

Vu shoo ri nyo, deing sho koid zoo ca.

Vu, noo shoo" yo vu shid shoo ri age zoo: ga su.

Lacid byi moo khoo aja ja: dab yomo gye" yung".

ZHANG: ZOO" (36)

Oe	oe	_b
----	----	----

1. Lhid" to" da" soug" cab yo' du go" ziri sho: lho:
khyeung" xo' byid: we'.

yoeb loeb boeb joeb joem"

l	f	d"	j	oe	b	u
y	oe	b	oe	b	i	g
k	a	b	m"	h	d	e

2. Dashoid yo' dashoid mo chung" go" da" soug" jen joem ri
joo sho' khyeung" xo' byid: we'.

Moug: vo loo lang"

dage" loo" shang.

Byu joeb lang"

goeb soo" we'.

Gyid yoo" sho'

mi lo" yoeb we'.

Soyin" yi shid moo

toeb lo" sho' ge'.

3. Myookhyoo" tho' moo lhid" cab ri joo sho' lhid" zhang:
we'.

oe

Loeb

4. Soug" jen joem ri apug pug nghab zhang: we'.

Moug: doeb.

Moug: doeb lo.

Moug: doeb loo bye:.

Moug: doeb loo lang" moo" ze: ge.

Moug: doeb lang" moug: ge vo lo da:.

Moug: doeb uri moo" yoem: kaid ze: shang.

5. Myookhyoo" tho' moo khuang shid" khuang myhid"
khoug: mo soug" cab ri joo sho' khyen: kaid we'.

1. _____ khoug: moo shoo" keig bo.
(Goo"/ Joem" / Da)

2. Zoshang: yi _____ khyoo: age loo".
(loeb/ soo"/ do")

3. Oug" mo _____ lo" khu: loo ge'.
(lid:/ leing/ voem:)

4. Toeb mo gyid yoo" loyid ri _____ boid lo".
(doem/ tei"/ doo")

5. Gug thung" ri moeb _____ thung" ca".
(moid/ do,/ moeb)

6. Nga" ba" yoo mo _____ toug" lo shi".
(atoeb/ amoeb/ adoem)

7. Moug: _____ lang" moo" zei: ge.
(goeb/ doeb/ joeb)

ZHANG: ZOO" (37)

Au au

1. Myookhyoo" tho' moo lhid" cab ri joo sho' lhid" zhang:
we'.

Au

au

Ngau

2. Dashoid yo' dashoid mo chung" go" da" soug" jen joem ri
joo sho' khyeung" xo' we'.

Zoshug sau" zi

baukhyui: shau".

Nunau" shug ri

bid shoem: khau:.

Myung: doug su:

age zoo: ga:.

Goin du" su:

yoem: gye" bo.

3. Myookhyoo" dang moo khuang shid" khuang myhid"
khoug: mo soug" cab ri joo sho' khyen: kaid we'.

1. Zoshang: dayug _____ nyid da.
(ngau/ byau/ da)

2. Byu dayug gyid lang ri yu" _____ nyid.
(seig/ jau"/ mau")

3. Sara yo' lo" _____ go".
(lid:/ shau"/ zeing)

4. Nyang _____ wigi thoem: tho: leing.
(mau"/ tei"/ doo")

5. Zooshang: yi _____ zi gye ngei go" da.
(moid/ cau:/ yau:)

6. _____ bye: da" voem: age zoo: su.
(Mau"/ Sau"/ Jau")

7. Seig _____ voo tau" age shoo" ga:.
(bau"/ sau"/ tau")

4. Byid: to'' da'' soug'' cab yo' du go'' ziri sho: lho:
khyeung'' xo' byid: we'.

cau: kau'' shau'' sau'' ngau mau'' gyau: thau''

ng	au	s	au''	y	gy	au:
m	au''	th	k	au''	c	g
sh	a	i	d	h	au:	e

5. Soug'' jen joem ri apug pug nghab zhang: we'.

Age khau''.

Khau'' lang'' yoboo yo''.

Khau'' su: ri yoboo byid: ca''.

Khau'' lang'' sabi'' baid yug zi shau'' kham zi nghoid.

Khau'' su: yo' dage'' zoem'' lang'' byu gang: doid lo'' su.

ZHANG: ZOO" (38)

Ngh	ngh	Yh	yh	Lh	lh
-----	-----	----	----	----	----

1. Byid: to" da" soug" cab yo' du go" ziri sho: lho:
khyeung" xo' byid: we'.

lhu: yhang ngho' nghan"
nghug lhoeb yheighoeb

ngh	o'	ng"	oo"	yh	ei	g
ngh	a	lh	oe	b	a	g
ngh	u	g	u:	h	au:	ng

2. Dashoid yo' dashoid mo zhung" go" da" soug" jen joem ri
joo sho' khyeung" xo' byid: we'.

Seig lhid ri kaid dang loo we'.

Yhung" moo cin: ri cu: khyo' we'.

Ayhung: ca" zi seig yo' koid.

Nghoin" to" shi" kung: shung too" we'.

3. Myookhyoo" tho' moo lhid" cab ri joo sho' lhid" zhang:
we'.

Ngh

ngh

ngho'

Yh

yh

yhung"

Lh

lh

lhid

4. Myookhyoo" tho' moo khuang shid" khuang myhid"

khoug: mo soug" cab ri joo sho' khyen: kaid we'.

1. Lid: yo' ____ lo" beig. (goo"/ ngho' / da)

2. Gyid ____ moo age lhu:. (lhid/soo"/do")

3. Ngei ri zid" _____ ri yo" young: da:.

(lid:/ leing/ yhung:)

4. Meing go" ei" shang _____. (lhu:/ tei"/ lha")

5. _____ khyam: moo gyo, abyeig sho' yu" we'.

(Moid/ Nghang"/ Lo,)

6. Jung do, su: mougsoug" _____ ca".

(lhab/ nghab/ gab)

7. Zooshang: yi _____ lheing: lho: lhu: nyid.

(jhang/ lhang/ yhang)

8. Lid moid uri _____ jo, seig kung ge gyau gyo".

(nghoin"/ soin"/ jhoin")

5. Soug'' jen joem ri goolhoo' nhab lho: ca'' nyid da'' thui:
ri joo sho' kaid we'.

—'' —' —' —:

Gyid gu dab lang lhid ca''. Gyid lhid ri seig yo koid.
Gyid lhid' moo lhu lang'' lhid ge mug shid. Lhid mo
thikhyam'' ri ayhen khyoug''. Thu yheig hid: yheig age koid.
Ngho khyid'' dab zi soid lhei'' we'. Lhid moo nhang''
deing: tho' ca''. Nhang'' oung ngei ri bain sho ayhung goo.

6. Soug'' jen joem ri apug pug nhab zhang: we'.

Anghoid zi age' tid.

Anghoid da'' dang: tid ri yoboo yo''.

Anghoid da'' moo'' ze: lang'' youg: khi'' da'' ayo, ju'' lo.

Nghoid ziyo' ge da'' khyoo: ri se' cang nyid ca''.

ZHANG: ZOO" (39)

Jh	jh	Nh	nh	Myh	myh
----	----	----	----	-----	-----

1. Lhid" to" da" soug" cab yo' du go" ziri sho: lho:
khyeung" xo' byid: we'.

jhu: myhang" nhoid jhang"
nhe" nhab myhi myhoug

ng	e"	nh	a	b	ng"	au:
nh	au"	ug	oi	a	c	g
sh	o	i	myh	d	u:	e
myh	i	w	d	jh	a	ng"

2. Dashoid yo' dashoid mo chung" go" soug" jen joem ri joo
sho' khyeung" xo' byid: we'.

Gug lhab jang" moo	seig gam moo do,.
Nhi" ri nhoid moo	moug: baid jhu'.
Myhug nei gi	jhang loug azang".
Lo, adu lang"	age kaid ga:.

3. Myookhyoo" tho' moo lhid" cab ri joo sho'
lhid" zhang: we'.

Jhu:

jhu:

Nhoid

nhoid

Myhang"

myhang"

4. Soug" jen yo' zhung" da" dang: thug ri khyeung" lheung we'.

Nyang" (bigi/ zigi/ wigi) ci: we' ayoo" lha".

Nyanu" (rigi/ bigi/ zigi) cikoid nyid la'.

Yoo" bang: (ziri/ rigi/ bigi) je je yo" da.

5. Myookhyoo" tho' moo khuang shid" khuang myhid"
khoug: mo soug" cab ri joo sho' khyen: kaid we'.

1. Nab soin: nghain: _____ dab shi" uri zoshang: yiri age lhu:
nhang:. (goo"/ yam: / jhu")

2. Joo _____ gi gug voeb moo gye re" zo:.
(jheig/ soo"/ do")

3. Tungkhoo" _____ to' ri gyam" koid byid: lang" gye zei:.
(lid:/ nhei:/ zeing)

4. Zoshang: yiri _____ jang" moo age nyhid: too".
(myhang:/ tei"/ doo")

5. Zoshang: yiri dalheing: lheing: lhu: _____ ca".
(moid/ do,/ nhang:)

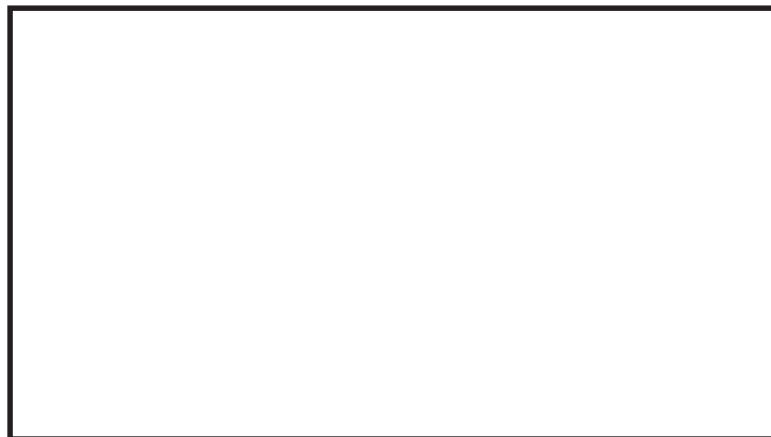
6. _____ gam gi bid shoem: gye yo".
(Myhang:/ Myhang"/ Myhi)

7. Myug nei _____ to" jang" moo jhang jhang ayhi:.
(nhei:/ nhe'/ nhoid)

6. Soug" jen joem ri apug pug nghab zhang: we'.

Nheig loem: moo amyid yu" da" dang: ri agoin: age tid. Nhoid moo age da" dang: ri atid goo". Age da" dang: tid lang" nhoid youg shoug" zi nghoid. Nhoid moo age zi age zoo: age shug. Byu nhoid mo sabi" ri yaukhi" shau" khyoo: age tid. Sabi" ri dang: tid ri myhang: myhang: mo age tid.

7. Vhoo: mo myid: thung yab moo nhoid soolhoo: ri sue" we'.



ZHANG: ZOO" (40)

Nyh	nyh	Vh	vh
-----	-----	----	----

1. Lhid" lheug to" da" lhid" cab joem ri soug" cab bui" sho'
sho: zhoem: lho: myookhyoo" tho' moo lhid" kaid' we'.

nyh nyh vh nyh vh b
oo a u" d o: oe ng"

1. _____ 2. _____

3. _____ 4. _____

5. _____

2. Soug" jen joem ri apug pug nghab zhang: we'.

Nyho: khaid.

Lo" nyho: khaid.

Joo ri lo" nyho: khaid.

Yoo mo joo ri lo" nyho: khaid.

3. Myookhyoo" tho' moo khuang shid" khuang myhid"
khoug: mo soug" cab ri joo sho' khyen: kaid we'.

1. Dang: tid ri a _____ tid lho: nu" nham tung" tid ca".
(nyho:/ yam: / da)

2. Khyoo: vhang: _____ bang: yo' age zoem".
(seig/ soo"/ vhang:)

3. _____ nya: da" lhid" cab ri ase' su: gi sabe" vhoos: moo
ju" loo" se' da:.
(Nyhang"/ Leing/ Zeing)

4. Jung do, ca" bye: yoomo soim _____ loo: we'.
(so"/ nyheing/ doo")

5. Ngoos: ri nang _____ yoid zi shoug" gyo:.
(moid/ do,/ nyho:)

6. Gyo, _____ nyid ri ayhe: zi".
(vhoeb/ zhoeb/ goeb)

7. _____ khoo" yho' gi macid" bue".
(Lhoo"/ Vhoo"/ Zhoo")

4. Aphyi: asain" bue" jo, da" lhid" cab joem ri soug" cab
bui" sho' sho: zhoem: lo: dashoid mo myid: thung yab
moo lhid" kaid we'.

nyh ng ny o: nu: ng

ng vh g a ng: d

vh oe i u b zi

l du ng lo, ei gi

5. Soug" jen joem ri goolhoo' nhab lho: ca" nyid da" thui:
ri joo sho' kaid we'.

— " — — ' — :

Thung: nghui" ri do' u: khyeing" yo' yo,. Jungzoo
khang moo" thung" nghui" ca. Jung yhi lang thung: nghui"
moo mougsoug" kaid voin yhe. Jung do ri thung: nghui"
aci agi da" zi nghoid. Thung: nghui" ri kootho moo voin.



PUG ZHANG: ZOO" (36-40)

Jhau" loo bye: da" soug" poem: joem gi he gu: anghoid la".

Myhi' yang:

Ngh	ngh	Yh	yh	Lh	lh
Jh	jh	Nh	nh	Myh	myh
Nyh	nyh	Vh	vh	-b	

Thui: zhoem:

Oe	oe	Au	au		
----	----	----	----	--	--

1. Myookhyoo" tho' moo lhid" cab ri joo sho' lhid" zhang: we'.

Vhoo"

Jhu

Nggho

Yhung"

Lhid

Nhoid



2. Myookhyoo" tho' moo khuang shid" khuang myhid"
khoug: mo sougcab ri joo sho' khyen: kaid we'.

1. _____ seing: ase' jang" mo zi age yu.

(Goo"/ Yhoem: / Da)

2. Myhang" gam moo shi" zei: lang" _____ gye: lo.

(ngho'/ soo"/ myhang")

3. Gyid _____ gu: uri age lhu:.

(lhid/ leing/ zeing)

4. _____ tab kaid lang" nu: shoo: lei.

(So"/ Tei"/ Nujhu:)

5. Gug yoo moo joo _____ khaid ge'.

(moid/ nyho:/ lo,)

6. _____ nhang" jhoug zo: ri gye ngham".

(Vhoo"/ Shoo"/ Ngoo)

7. _____ da" zoo: shug age zoo:.

(Kau"/ Sau"/ Gau")

8. Jhi: gi: gug to" da" _____ nghoid.

(joem:/ loem:/ yhoem:)

9. Voogung moo vu, age _____ kaid.

(soid/ nhang:/ myang)

3. Khyeung" lheung to" da" dang: thug yo' du go" da" soug cab ri soug" jen khoug: moo khyeung" lheung byid: we'.

yiri wigi lha" bigi zigi

1. Zoshang yiri loeb boug moo age shu" yhi:.

2. Sara tid wigi mougsoug" nghab khyo" akoid.

3. Jung khyoo: dage" loo" shang lha".

4. Nyanu" bigi soo" soo" moo" ze:.

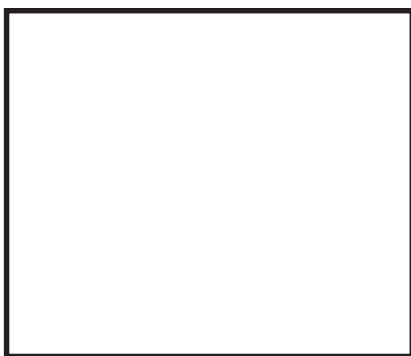
5. Aba" tid zigi jung moo age byo, goo" ga:.

4. Byid: to" da" soug cab yo' du go" ziri khyeung" khyo' yab mo sho: lho: khyeung" xo' byid: we'.

yhung" vhoo" loeb myhi lhid
myhang" mau" ngau jhu: nhoid

myh	i	vh	oo"	lh	b	ng	c
m	a	jh	u:	oe	i	au	m
yh	u	ng"	l	nh	oi	d	au"

5. Vhoo: mo myid: thung yab moo (**jhu:/ nhoid/ yhung''/ lhid/ ngho'**) soolhoo: ri lhid'' sue'' we'.



6. Soug" jen joem ri goolhoo' nghab lho: myid: to" da"
dang: myid: ri phid: sho' kyoo" we'.

Myhang" gam gi seig moo" gam daja: nghoid. Akya:
kya: agyi: gye myo: ja: nghoid da:. Hug yomo bid shoem:
jham" jham" ga:. Myhang" gam moo ngho' zoo: yin" zoo:
gye: noug: nyid ago". Ashi" zei: yo, moo ngho' gye nyid
yhangti" gyung we' lhoung lo. Khyoo: nam moo myhang"
gam jo, lang" so" lid: bang: ri jham" da" doug noo: jang:
byid:. Myhang" gam ri bid shoem: shid mo meing khyoo:
nam moo we' lhoung sho" to" ago" da:.

1. Myhang" gam moo ngho' zoo: yin" zoo:
kha: u" ri je nyid.
2. Myhang" gam moo gyung kha: u"
lhoung lo.
3. Meing: khyoo: nam moo myhang" ri ce:
noem shid mo sho" go" lha".
4. Myhang" gam gi kha: su" agyi: cin' lho:
gyi: lha".

ZHANG: ZOO" (41)

Zh	zh	Mh	mh
----	----	----	----

1. Myookhyoo" tho' moo sougcab ri joo sho' lhid" zhang:
we'.

Zhang:

Zhoem:

Zhug

Zhang"

Mhau'

Mhoug"

Mhang"

Mhug

2. Myookhyoo" tho' moo khuang shid" khuang myhid"
khoug: mo sougcab ri joo sho' khyen: lhid" kaid we'.

1. Nga" ba" _____ zoo: koid lo.
(mhoid/ yam: / da)

2. Mau" _____ too" su: hang" nghoid da:.
(seig/ soo"/ zhung:)

3. Sooyoo mo _____ dadu: lo.
(mhung:/ leing/ zeing)

4. Tung: yoo moo lazei" _____ to".
(so"/ zhung"/ doo")

.5. Yhoem: khung: moo _____ moug: ca".
(mhang"/ do,/ lo,)

.6. Boem gung moo _____ u" myheing.
(mhang"/ zhang"/ lang")

7. Yhoem: koid jang: moo voem _____ nyid.
(lo"/ zho"/ nho")

8. Gyid nung" mo gyid _____ da:.
(gei:/ zei:/ mhei:)

3. Dashoid yo' dashoid mo chung" go' soug" jen ri joo sho'
sho: khyeung" xo' byid: we'.

Lo, zhoeb yo'	mhoid koid da:.
Voo: yo'	hang" we' ngheing".
Myung: yoomo	thoin: go" nyid.
Mhau' su: ri	thoung" mhoin to".
Zhu: lang"	chung: no: nyid.
Zeing mhe' lho:	thoid khyoo" we'.
Zhung: tang moo	khung: ki" we'.
Lazei" pheii" buii" sho'	to' yab nyid.

4. Soug" jen ri nghab lho: dang: thug (**ri/ yo'**) ri sho: lho:
khyeung" lheung byid: we'.

1. Voem: zo: ri chung: lho: zoo: ca".
2. Nghang" yheung ri mhoid yo' khu".
3. Shivoo: ri nghang" gam ga: atid la".
4. Voem: yo' shoo" soug" bye:.
5. Oung: khoug: mo vhu: yo' seing" no.
6. Zoshang: shoeb to" ri zheig zheig soo" we'.

5. Myookhyoo" moo ca" da" sougcab ri joo sho' lhid" kaid' we'.

1. Yhoem: koid mo, _____ moug: nyid.

2. Nyid" zang voem: _____ shang.

3. Khyam: khoug: moo lazei" _____ to".

4. _____ mo gyid khu" shoug nyid.

5. _____ oug" mo voem: yhung: zo:.

6. Gyid oug" moo _____ yo' lhu:.

7. Ajang" lhu: ei" nyid su: gung _____ yang".

8. Voem: boeb moo _____ jung" too' bye:.

6. Byid: to" da" sougcab yo' soug" jen bui" sho' xo' lhid" kaid' we'.

1. Zho" _____.

2. Mhoid _____.

3. Zhang" _____.

4. Mhang" _____.

ZHANG: ZOO" (42)

P	p	Py	py
---	---	----	----

1. Myookhyoo" tho' moo sougcab ri joo sho' lhid" zhang:
we'.

Poo"

poo"

Pyi"

pyi"

2. Dashoid yo' dashoid mo zhung" go" da" soug" jen ri joo
sho' khyeung" xo' byid: we'.

Pug lhoo: pug lhid"

thug poeb to".

Ngho, myhug ri

she: pyam ca".

Pyeing dang ri

zhang: we'.

Age ziri

lo" tid byid: we'.

3. Myookhyoo" tho' moo khuang shid" khuang myhid"
khau: mo sougcab ri joo sho' khying: kaid we'.

1. _____ da" nu: nam moo atain" yhi:.
(Goo"/ Yam: / Peig)

2. _____ khoug: moo cin: lo" geig dang: loo we'.
(Pung"/ Soo"/ Do")

3. Cen: _____ shang: too" we'. (lid:/ leing/ pyang")

4. _____ gi: gyid moo tung: moo nyid. (So"/ Poo"/ Doo")

5. _____ zhid gi shin" shang. (Moid/ Do,/ Pyi")

6. Myid _____ pyoo: nyid lang" kang: so' sheing:.
(pyam/ pyoo:/ byoo:)

7. _____ pug mo sham: lo" yu loo we'.
(Gab/ Joem/ Pyab)

8. Shoo" _____ yeing shug ri yoem: bo.
(vhoo"/ poo"/ lhoo")

4. Soug" jen joem ri goolhoo' nghab zhang: lho: dang:
myid: joem ri joo sho' doem sho' khyoo" we'.

Sooyoo moo tumoo" byoo: gi khyung: moo lhung
nyid. Tumoo" khyung: moo age yhe: zi". Tumoo" byoo:
paid lang" byu ge shid:. Tumoo" byoo: gi ni ni mo" da"
avoid nghoid. Tumoo" byoo: da" dug gye thain: ga: su.
Nga" ba" bi" tumoo" khyung: da duang: yhe: myang to"
ga:. Tumoo" byoo: gi she: pyam wa ciwe' aboo. Byoo: boo
lang" pyab moo joem" moo byeing" shoin: sho' lhung
shoug" yu ga:. Tumoo" byoo: gi pyo' moo we' jang: dam
moo we' nyid. Sooyoo lo" ri sham: pyab voin we'.

1. Tumoo" gi khamoo: lhung nyid lha".
2. Tumoo" byoo da" avoid kha: su: nghoid.
3. Tumoo" byoo gi kha: yhang: te" zi nghoid.

ZHANG: ZOO" (43)

Ph ph Phy phy

1. Myookhyoo" tho' moo khuang shid" khuang myhid"
khoug: mo sougcab ri joo sho' khying: kaid we'.

1. Moug dakhi' ri dage" coem _____ zo: ago".
(goo"/ phi / da)

2. Gyid thug ci: khyoo' yoomo _____ ga: gyid shoin khare".
(phya/ pho/ phyin)

3. Mangsoo: ri loem khoug: su: ri _____ byu ga:.
(phung:/ phu/ pheing)

4. Khoin' yo' phug thang _____ yo' kyo' ca".
(phoo"/ phyi"/ pho")

5. Tei" to" nu: ri yhe: _____ kaid we'.
(phid:/ phyo,/ pho,)

6. Shi" gam mo shi" _____ yu shang.
(phyi/ phu"/ phyo')

7. Myo, myang bye: khoem" _____ kaid we'.
(kyang/ phang/ lang)


2. Dashoid yo' dashoid mo zhung" go" da" soug" jing joem ri khyeung" xo' byid: we'.

Myo, myang bye:	poin" pyam we'.
Phyang" gung moo	khoem" phang we'.
Seig ngoid ri	myeing" myo:.
Nu: ri phyug	phyang" shoem" we'.
Voem: bain ri	phyeig ja: nghoid.
Shookyug	phyug ein: beig we'.
Phyin: goo" lang"	phoid to".
Lazei" gi	phain ga: we' tid.

3. Lhid" to" da" sougcab yo' du go" ziri sho: lho: khyeung" xo' byid: we'.

phyi"	phoid	phyo'	phei"
phyau:	phau"	phyid	phoin"

ph	ei"	phy	o'	y	i"	n"
m	au"	i	au:	phy	oi	g
ph	oi	d	d	ph	ei"	e



4. Soug" jen moo ca" nyid da" sougcab ri joo sho' soin: lhid"
kaid we'.

1. Sha" thang yho' ngaid _____ zo:.

2. Tei" thoem" ri gye _____ youg:.

3. Myiyu ri _____ jid: kaid.

4. Nhoid _____ ri myeing" myo:.

5. Voem: _____ moo voem: kaid to".

6. Thung jhoin: moo la _____ nyid.

7. Sho' ja: ri shoo _____ ga:

8. Seig _____ moo shi" zei: to".

9. _____ kyoug" gi gug sei" zo:.

10. _____ yoo moo lasoo' gye nyid.

11. Lazei" zo: ri _____.

5. Soug'' jing joem ri apug pug nghab zhang: we'.



Seiggam phyoo'' moo shi'' zei: jo,.

Shi'' zoo: noug: lang'' do, phyo' we'.

Shi'' phyo' ri baid phyo' lang'' gyo'' go, da:.

Ngoo do, phyo' ba- nang aphan: shi'' lhe''.

Ngoo phyo' khyo' shi'' ri nang koid we'.

Shi'' bain phyo' lang'' nu: ri pheing'' gam zain: zhoo''
shang.

Nu: ri pheung'' bain zain: zhoo'' lang'' yhoem: loo''
shang.

Yhoem: lo'' uri nu: we' she: loo'' shang.

ZHANG: ZOO" (44)

X	x	ue
---	---	----

1. Soug" jen moo ca" nyid da" soug cab ri joo sho' soin: lhid" kaid we'.

1. Yoothung" zang moo ____ pyi" myhu".

2. Lamei nu" ri khyoug: ____ lho: jhoug zoo: shang.

3. Oug" ____ ri kalug deing" deing" to" ca".

4. Yuggi yi _____ sheing: age too".

5. _____ gi seig she: jhang' moo ci:.

6. ____ kyoug" gi atho' tid phoug" dab.

7. Nuzeing gi nuzoo: _____.

8. _____ moo gug thung".

9. Lo, ____ pui" moo dage" yhi: shang.

2. Myookhyoo" tho' moo lhidcab ri joo sho' lhid" zhang:
we'.

X

x

Xue:

xue:

3. Soug" jing joem ri apug pug nghab zhang: we'.

Xang: dadu: lo.

Xang: gi gye" yoem: bo.

Xang: gi gye: gyi: da" goungnyhoug nghoid.

Xang: zeigye: phoug" dab.

Xang: kyang: ri jhoug" yu lho: moo" zeigye: nhang:.

Xang: ri voo:- seig joem ri zo:.

4. Lhid" to" da" soug" jen joem moo ca" nyid da" thui: ri joo sho' kaid we'.

Seiggam phyoo moo shi ze i to".

Shi" zoo noug lang do phyoo we'.

Shi phyoo ri baid phyoo' lang gyo go, da:.

Ngoo do, phyoo' ba- nang aphan shi lhid.

Ngoo phyoo khyo shi" ri nang koid we' lhid.

Shi bain phyoo' lang" nu: ri pheing" gam zain zhoo shang.

Nu: ri pheing bain zain zhoo" lang yhoem: loo" shang.

Yhoem lo" uri nu we' she loo" shang.

5. Vhoo: mo myid: thung yab moo xang: soolhoo: ri sue" we'.



ZHANG: ZOO" (45)

Ua ua

1. Lhid" to" da" sougcab yo' du go" ziri sho: lho: khyeung"
xo' byid: we'.

khuang: sua' kua" zuang
guang gua thuang" zhuang"

th	g	s	au'	y	ng	ng
kh	ua	ng:	k	ua	c	ua
zh	ua	ng"	g	ua"	au:	ng

2. Myookhyoo" tho' moo lhidcab ri joo sho' lhid" zhang:
we'.

ua

Khuang:

3. Myookhyoo" tho' moo khuang shid" khuang myhid"
khou: mo sougcab ri joo sho' khying: kaid we'.

1. Yug phoo' ri sabi" _____ to" ga:.
(goo"/yam: / ruang:)

2. Sooyoo moo shoocid: dadu: _____ xuang ga: so" yin".
(seig/ xuang/ do")

3. Jung yhe: ri _____ kyeing" age void yhi:.
(byikua"/ leing/ zeing)

4. Khyabkhoo" lo" _____ kaid we'.
(so"/ tei"/ xua:)

5. Lug hku ri _____ ga: ze" kho' kaid.
(khua/ do,/ lo,)

6. Ougkhu' kung _____ age ze" myheing.
(chung:/ duang/ kuang:)

7. Myhi' miyi _____ loung void.
(khuang:/ jhuang:/ guang)

8. Duang: _____ moo nu: byid gyo" jo,.
(guang"/ khuang"/ ruang")

4. Dashoid yo' dashoid mo chung" go" da" soug" jen joem ri
joo sho' khyeung" xo' byid: we'.

Yhoem: yam moo khu moo kuang" kaid we'.

Oug" mo voem: byoo yho' rua.

Khuang: ri myo, thuang: we'.

Duang: khoug: moo khua: khua: ci: we'.

Jhuang: moo void to".

Byoo: mo, myo: byid gyo" jo,.

Mang" ri lo, yo' gyid kaid to".

Byoo: yho' ri thua: lho: ki' we'.

5. Soug" jen mo ca" nyid da" soug" cab ri joo sho' soin:
lhid" kaid we'.

1. Shooxu: oug" ngei" uri gyid kaid ri _____ ga:
myeing.

2. Zoo: _____ ri zoo: lain:.

3. Yang" thi moo lug zeing zang" lang" guang _____ ga:
myeing.

4. Xiyam ri _____ nang: thoid to".

5. Ngabu: _____ lang" voosi" shoug" zo:.

6. _____ moo khua lho: lid we'.

7. Myivhoem: thui: _____ ga: myeing.

8. Gyid gyung: moo ngoo: _____ yhe: lo".

9. Midcoo: moo thoug" ri _____ sua ga:.

10. Neitau" zang" nang:- khyoo: _____ vhuang:.

PUG ZHANG: ZOO" (41 - 45)

Jhau" loo bye: da" soug" poem: joem gi he: gu: anghoid la".

Myhi' yang

Zh zh	Mh mh	
P p	Py py	
Ph ph	Phy phy	X x
ue	ua	

Thui: zhoem:

1. Khyeung" lheung to" da" dang: thug yo' du go" da" ziri soug" jen mo sho: lho: khyeung" lheung byid: we'.

su' shi" la" o" moza:

O" re" myeing kha: su" ga: la.
Nang nu ayoo" la".
Lhang: myu gi dakhyi moza: anyid.
Nang lo" lho: doem loo we' su'.
Aloo" shi" lang" doem ri" we'.

2. Soug" jen joem ri apug pug nghab zhang: we'.

Akha zain vhooyoo koid wa shid mo soin ca" bye:.
Phyi" yo' khoim we' koid ca". Vhooyoo ri phyi" lho: myo, ri
lo, yo' khoem: zung lho: nghe' pyam ca". Vhooyoo moo
lo" yhoeb ca" bye: yoomo cen: we' oug" we' soin kaid ge'.
Moo" ze: lho: noo: lang" gung cid" lang" sabpya: pyi"
soin' kaid byid: we'. Zouxoin" shid re" xu: we' soin kaid
byid: we'.

3. Soug" jen joem ri apug pug nghab zhang: lho: jo da"
thui: kaid byid: we'.

Xang: dadu lo.

Xang: gi yoem gye bo.

Xang: gi gye gyi: da gougnyhoug nghoid.

Xang: ze: gye phoug dab.

Xang: kyang: ri jhoug yu lho: moo ze: nhang.

Xang: gi voo:- seig joem ri zo.

4. Soug" jen mo ca" nyid da" sougcab ri joo sho' soin: lhid"
kaid we'.

1. Zoshang: yi nham" pheii" _____ zo:.

2. Mhang" yoo moo nu: _____ zo: nyid.

3. Xam: ri ajang" ___ yo' kyo' shang: ca".

4. _____ gam youg: ri shoem" bain: yo" koid.

5. Lamung shi" ri lo" _____ shang.

6. Lamei _____ lho: jhoug kaid' we'.

7. _____ zei gi gye phoug" dab da.

8. _____ tang moo zung" zung" zhung: we'.

9. _____ gi tung moo gyid: moo nyid.

10. Neitau" zang" nang:- khyoo: _____ vhuang:.

5. Lhid" shid" byid: to" da" sougcab yo' yo" lhid" da"
soug" jen bue" sho' xo' lhid" kaid' we'.

Pyi" _____

_____.

Poo" _____

_____.

Mhoid _____

_____.

Zhoeb _____

_____.

ZHANG: ZOO" (46)

Ui ui

1. Soug" jen joem ri goolhoo' nhab lho: ca" nyid da" thui:
ri joo sho' kaid we'.

— " — ' — ' — :

Lhid" to" ziyo' dakhyo" ti" nhab ca". Tid ziyo' dayhang: ti"
cang we. Myang ziyo' dakhyo" lhid" ge'. Yu" to" ziyo' daja:
za: lhid" ca". Langhui" da" khyoo: lhid" to". Langhui" ri
myo, byen jhang moo ci: ga: tid go".

2. Myookhyoo" tho' moo lhidcab ri joo sho' lhid" zhang:
we'.

Ui

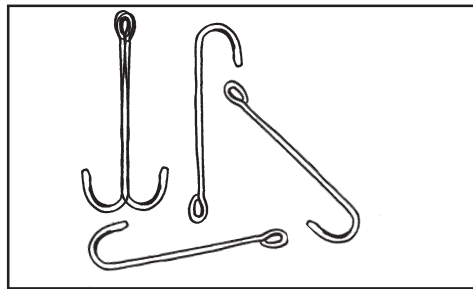
ui

Langhui"

2. Dashoid yo' dashoid mo chung" go" da" soug" jen ri joo
sho' khyeung" xo' byid: we'.

Langhui" yo'	sham: kui" kaid to".
Yhui' yhui' da" ziri	shi" phyo' shang.
Sham: zhug moo	oug" xug to" da:.
Makhoin" thui:	yu" co'.
Kyoo: kui: moo	tam" gyoo: pyo: da.

3. Soug" jing joem ri apug pug nghab zhang: we'.



Nga" ba" langhui" daloem: koid to" da. Hau: langhui"
ri yoo byin uri ci: zi nghoid. Myo, ri langhui" yo' khyoem:
pyam' we'. Seig langhui" tho' joto' langhui" je geing: da:.
Langhui" gi yoothung" yoogu: koid bang: shid re" aci: age
da" jonu" zi daja: nghoid.

4. Khyeing'' kyo' yab moo kaid to'' da'' lhid'' cab joem mo khyen: sho' yu lho: sougcab 10 cab bui'' sho' lhid'' khyoo' we'.

b	l	ai	oi	ei	n	b	c	v	i	u	n	m	n
h	o	d	i	g	y	k	d	_:	_'	_''	_'		

1. _____ 2. _____ 3. _____

4. _____ 5. _____ 6. _____

7. _____ 8. _____ 9. _____

10. _____

5. Lhid'' to'' da'' soug'' cab yo' du go'' ziri sho: lho: khyeung'' xo' byid: we'.

kui: sui: yhui' suid''
thui: yhui' pui'' kui''

k	ui:	k	s	yh	gy	au:
th	p	ui''	ui:	a	ui'	g
sh	s	ui	d''	yh	au:	e

ZHANG: ZOO" (47)

W w

1. Myookhyoo" tho' moo soug" cab ri joo sho' lhid" zhang:
we'.

W

Wim:

Wei

Woe

Wang

Wim"

Wam'

Wam"

2. Soug" jen moo ca" nyid da" soug" cab ri joo sho' soin:
lhid" kaid we'.

1. _____ anoug ga: he: nyid.

2. Zooshang: wa _____ ga: ngau nyid da:.

3. Ngoodo, ri _____ do, ga: we' tid.

4. Khu' moo wimdo, _____ du: kaid to".

5. Ngoo ri oug: nham gi _____ moug
zoo: we' ga: byid:.

6. Zooshang: ri mam: mam:- _____
zoo: shang ga: tid.

7. Gyung bung: gi _____ ga: loung nghaid.

8. Noo su: woe _____ ga: dug nyid.

9. Moo" ze: ge' ga: ziri moo" ze: _____
ga: we' yo" lhid".

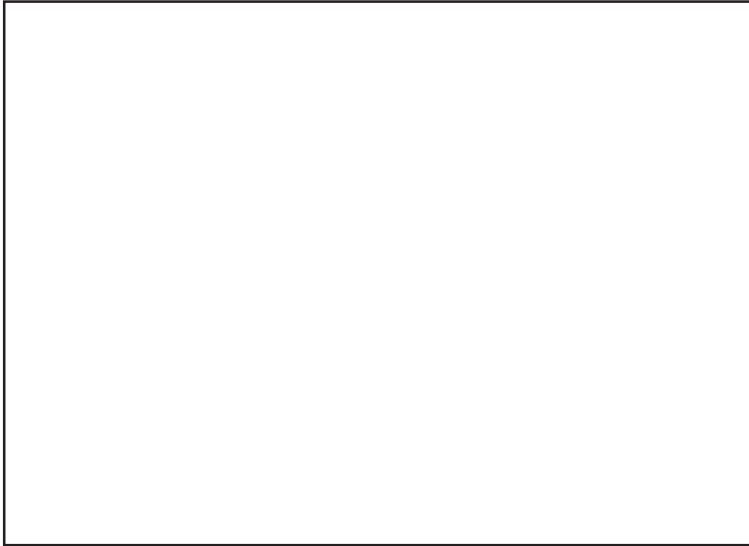
10. Zooshang: zoo: _____ myho: nyid.

3. Alhu: alheig byid: to" da" soug" jen toem joem ri nya:
soug" jen yo' soug" jen sho: lho: jo da"- dang: kang: bo
da" soug" jen byeung" bui" sho' lhid" zhoem: we'.

wim! anoug: ein: age hi:./ Woe woe ga:/ wimdo, yhe: yu
lo./ Zooshang: ri macid"/ dei nhang: ri/ wim" ga: tu" kaid
da:./ wang ga: ngaid./ Zooshang: ri wam"/ Nga" ba" ri yoid
kaid ri/ zhug ri wa" ga:/ dug nyid su: hang" nghoid./ nhoid
kham: nhang:./ Myhi phoo' yi/ ga: tid lho: ayhang: zho"./
Ngoo thung" mo/ Moug" yab su: ri lakhoid"

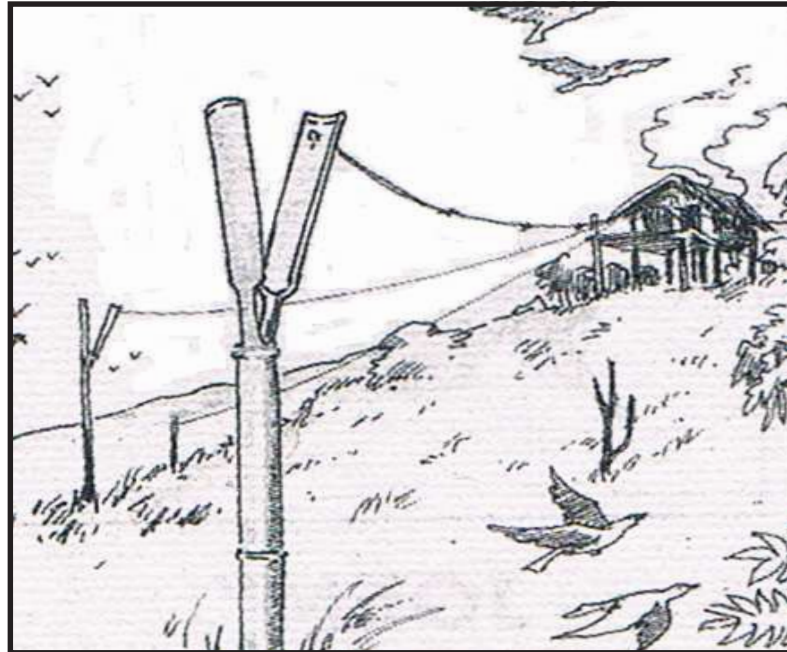
1. _____.
2. _____.
3. _____.
4. _____.
5. _____.
6. _____.
7. _____.

4. Vhoo: mo akhyoo" again ri nhab lho:- yo" sue" wa da"
soolhoo: daloem: ri khyeung" khoem to" da" myid: thung
yab moo sue" kaid we'.



Mang: noug" mung nham: yi wim: yug nghoid. Wim:
yug goin" jung do, nyid. Mang: noug" gi jung moo asoo"
wim: yo". Nya: mung nham: yi wim: yug goin" loem: lug
ago" da. Asoo" wim: ein: da" nge thang yug gi myiyi: zoo:
nghoid.

5. Vhoo: mo myookhyoo" moo soolhoo: da" akhyoo"
again ri lhid" kaid we'.



ZHANG: ZOO" (48)

F	f
---	---

1. Myookhyoo" tho' moo lhid" cab ri joo sho' lhid" zhang:
we'.

F


f

fu"

2. Myookhyoo" tho' moo khuang shid" khuang myhid"
khoug: mo sougcab ri joo sho' khyen: kaid we'.

1. Gye: pyo: ziri nhoid _____ nyid.
(goo"/ fui: / da)

2. Zooshang: yi _____ lho: lhu: nyid.
(foem:/ soo"/ do")

-
- 
3. _____ kaid mougsoug" bo lo" byid: we'.
(Foin:/ Leing/ Zeing)
 4. Agoin: age moug" _____ ying".
(so"/ tei"/ fo')
 5. Agoin: age lu: _____ su'.
(fu:/ do,/ lo,)
 6. Lung lung fa" _____ age mhoug' zoo:.
(ka"/ fa"/ ca")
 7. _____ soin: chung" ca".
(Lu"/ Nu"/ Fu")
 8. Shi" _____ shi" gye nham".
(goem/ shoem:/ foem')
 9. _____ bang: gi dang: atau" ashu: tid.
(Koo"/ Foin"/ Yoin:)
 10. Zooshang: dayug nya: yhid ri sho: fo: yin".
(lo:/ zo:/ fo:)

3. Alhu: alheug byid: to" da" soug" jen toem joem ri nya:
soug" jen yo' soug" jen sho: lho: jo da"- dang: kang: bo
da" soug" jen byeung" bui" sho' lhid" zhoem: we'.

Lafoem shi"/ daja: nghoid./ yo" phyo' oung"/ Fu" fu
ri gyo,/ mhoug zo: age koid./ zha: fa: ge./ ri ngho' joem
gye: zo:./ Zouxoin" oug" moo/ fang: fang: ga: lo./ lang"
gye: ngham"/ shi" zho' ri yeing"/ Shi" foem shi" ri/ Sabi"
ri fa" zo:/ voemdoug: moo/ yhe: fue: ca" bye:./ gye:
ngham"/ zab shi" kaid/ gyo" da" ayo, moo/ Fang" noin gi/
Yoothung" moo myo,/ macid" gi/ Zooyoid lang"/ Loem lug
bang: gi/ u yo' rhi: zo: ri/ Seig fu shi" fu

1. _____.
2. _____.
3. _____.
4. _____.
5. _____.
6. _____.
7. _____.
8. _____.
9. _____.

4. Soug'' jen joem ri goolhoo' nhab zhang: lho: dang:
myid: ri phid: sho' kyoo'' we'.

Fang'' noin: gi boem moo zhoung''. Fang'' noin: gi
myo, fue: byid: lang'' gye ge. Boem moug: moo nyid
bang: hang'' we' fang'' noin yoo koid. Fang'' noin: gi macid
zeing nghoid yoomo ci: boem da:. Byu no loo lang'' fang''
noin: ri nyhoin'' hug. Yhoem: khang'' moo fang'' noin: aci:
agi da'' macid'' daja: nghoid.

1. Fang'' noin: ri khamoo kaid lha''.

_____.

2. Fang'' noin: yoo koid bang: hang'' nghoid.

_____.

3. Boem moug: mo macid gi ce: noem nghoid.

_____.

4. Boem moug: mo yhoem: khang'' moo'' moo ce: noem
jo, ca''.

_____.

ZHANG: ZOO" (49)

R	r	Rh	rh
---	---	----	----

1. Soug" jen mo ca" nyid da" **r - rh** yo' lhid" da" lhid" cab ri joo sho' soin: lhid" kaid we'.

1. Yugmyhi' ri subi" zoo yomo _____ to" ga:.

2. Nga" ba" nu: _____ zhug nyid.

3. Yhoem: moo _____ lam" we' lhid".

4. Zo: ziri _____ ga: we' tid ago".

5. Ngi bang: ri age rhui' zoo:.

6. Zooshang: yi _____ zhug nyid.

7. Mangzoo: riwe' age _____ ga:.

8. Ayhang: zo: ri _____ lho: zoo: ca".

9. Pain" cu' lang" _____ lho: lhab to".

10. Thoem" boeb _____ lang" jhoid leung.

2. Alhu: alheig byid: to" da" soug" jen toem joem ri nya:
soug" jen yo' soug" jen sho: lho: jo da"- dang: kang: bo
da" soug" jen byeung" bui" sho' lhid" zhoem: we'.

gye phoug" da:./ Seig doem: ri/ Nga" phoug" yoo khyoo:/
age peig rhui./ gug thung: vu, shang./ Jung gyoo" lang"/
Rheing" nu: gi/ ci: lho: dang: da:./ ajang" dare" nyid./
Ngho' gi dung rhua:/ Yoo mo gug/ yoo khyoo: ri" we'./
Noug" goin ro/ doin: rheung" shang./ Thung" kyid: ri/
nurheung" yo' tho'.

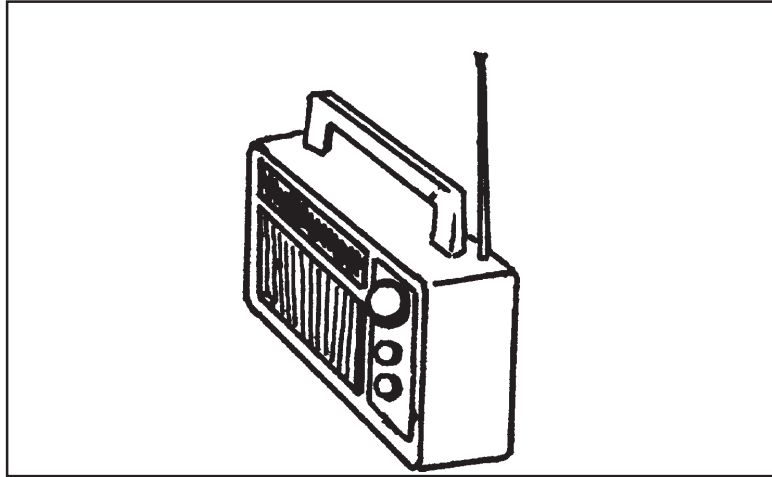
1. _____.
2. _____.
3. _____.
4. _____.
5. _____.
6. _____.
7. _____.

3. Soug" jen joem ri apug pug nghab zhang: we'.



He: alhoo: gi tungzoo: Lacid da" vhoïd sham: yo' vhoïd lham: nghoid. Tungzoo: byumyu" yi da" byuthung" byuri: moo ci: zi nghoid. Beigzoo: mangnhung" yugphoo' zoomo, myiyu yoobyein khyoo: moo ci: zi nghoid. Nga" ba" ri yugphoo' ga:- sham: yo' lham: re" byid: lho:- nu: yo' rheung" re" ngho" ci: da:. Vhoïd sham: yo' vhoïd lham: ri myhi phoo' yi gye se' phoug" tab ago". Myhi phoo' yi myiyu myibyid: khyoo: moo yugphoo' khyo" zoomo, yiri shoug dung" ga: lhong byid: boem ago". Zoomyi: pheung" fuang pui: moo yugphoo' yigi zoomo, phoo' seig ri sham: byang yo' thung nghui" ri zoomo, zhoem" ga: lhong shoug. Myhiphoo' nheigboo ludaid dayham" bang: gi vhoïd sham: yo' vhoïd lham: ri phoug" ase' tab nghoid ago". He: da" sham: yo' lham: ri dagyam" yo' dagyam" kootho' thid yu lho: xo' ci: yhe: loo" ca".

4. Vho: mo myookhyoo" moo soolhoo: da" akhyoo" again
ri lhid" we'.



5. (r yo' rh) bo ci: lho: tungzoo: Lacid byumyu" gyi: sheing:
loo sho' khasu" koid bo yo" tu: to' wa khyoo: ri yo" lhid"
yam" lhid" we'.

ZHANG: ZOO" (50)

Q	q
---	---

1. Vhoo: moo byid: to" dang: myid: joem ri phid: sho' yu"
lho: lhid" shug we'.

1. Oung" zo: oung" shug uri qei zi yhoug: gyin: la"- oung"
zi yhoug: gyin: la".

2. Nang ce: ja: oung" yu" bye: lha".

3. Zooshang: yi Qei" myho: ri khasu" koid ca".

4. Zooshang: zoo: ri qa ga: akyug lhid".

5. Que, que, ga: dug nyid su: no da:.

2. Q yo' lhid" da" lhid" cab khanoo' yo" lhid" lha"- lhid"
khyo' yu" we'.

1 _____

2 _____

3 _____

4 _____

5 _____

6 _____

7 _____

8 _____

3. Myookhyoo" tho' moo ca" nyid da" soug"cab ri khuang shid" khuang myhid" khoug: mo joo sho' khyen: kaid we'.

1. Zooshang: yiri baloid yo' amthang: moo soeb byid:

lang" _____.

(shoo" me: lo"/ qei" myho:/ dam joid bue")

2. Bi: laid kid" mo _____ lo da" nghan" pho' shang:

nyid. (ngho"/ jhid"/ qei)

3. Pho' seig myhi seig ri ekoin _____ byid:.

(de: / qei"/ zhoem")

4. Lakhuid" _____ ga: ngaid.

(qang / hab/ ngang)

5. Lhang: voo bang: dain ri _____ ga: dain ago" da:.

(hid / aka"/ aqa")

PUG ZHANG: ZOO" (46 - 50)

Jhau" loo bye: da" soug" poem: joem gi he: gu: anghoid la".

Myhi' yang:	W w	F f	R r	Q q
Thui: zhoem:	Ui ui			

1. Dashoid yo' dashoid mo zhung" go" da" soug" jen joem ri joo sho' kyeung" xo' byid: we'.

Langhui" yo' wa bang: gye myo:.
Noyoem" boug wigi myo, khyoem: we'.
Moug" hang" wigi zouxoin" ge koid
Lakhuid" vang dathung: qei loo we'.
Rediu: tam" gyoo: wim wim ga: myeing.
Fu" ri wei" myho:.
Zoshang zoo: thoem: tho: leung.
Kid" mo cin: ga: ngaid kaid.

2. Soug" jen joem ri apug pug nghab zhang: we'.

Yhoem: moo myi: said langhui" koid to" we'.

Yoothung" moo vu, wum: du: khu: to". Mau" mau" fang:

fang: age nyid yin". Nga" joyoo bo qei" too" byid: we'.

Rediu: ri atheung: tam" gyoo: su: gi lu dang: aseig ri

shoug" gyo:. Nurheung" ri yhe: koin" loo we'.

3. Soug" jen ri alheung: lheung: nghab zhang: lho: dang:
thug ri khyeung" lheung byid: we'.

1. Atid kaid shi" ri are" loo.

2. Hau: da" ziyo' dage" yu loo we'.

3. Nga" phoug" wim wim ga: no myeung

nyid.

4. Hug yhang: te" ziri cikoid ci: lo lha".

5. Yhoem: seig ri yo" koid yu bye:.

6. Rediu: tam" gyoo: wa ga: re" lo da.

4. Lhid" to" da" soug" jen joem moo ca" nyid da" thui: ri
joo sho' kaid we'.

— " — ' — :

Langhui" gi yoothung" yoogu koid bang aci agi da"
jonu daja nghoid. Yoothung" yo' yoo moo ci wa shid re"
langhui" wum: loem koid ci yhe. Ngoo ri zoxoin koid wa
shid re" fu ni yo' shooxu qei voin ri" we' ga tid. Nga" ba
moo ze i uri Rediu: riwe' tam gyo. Hug yoomo ngoonu" ri lu
dang yo tid kyo nyid. Lu dang aseig shoug" gyoo wa shid
re" Rediu: tam gyoo shang. Nga" ba" yhoem khyoo: lo uri
we' nurhueng moo thang lhung she lo.

5. Akhyoo" again khoug: moo- byid: to" da" soug" cab no,-
kha: cab khanoo' bo ziri jid" jid" nug nug sho: lho:
khyeung" lheung byid: we'.

**dei/ akhyoid/ rhe"/ khyoo:/ ludang:/ tid/ oung:/ macid"/
gung/ voogung/ noophyoo"/ yang"/ zei/**

Zooshang: bang: myi phoo' yi dei nhang: ri anau
akhyoid age koid. Voem: zo: ri nu" nu" rhe" lho: zoo: ca"
ga:. Rediu: moo yang" zain: khyoo: atheung: lhoo: tam"
gyoo: we'. Nang shoug" gyo: da" ludang: aseig' ri byin
cang" yiri we' doem tid kyoo" we'. Fang" noin: gi oung:
shoin: ri nyhoin" shug ri ge da" macid zeing daja: nghoid.
Gam gung yo, ju" sho' voogung age lam". Yhoeb loo yid ri
zei cid" ca". Yhoeb noug: agyi: lang" noophyoo" thung"
shoug" loo wa. Nab soin: no' no' to' ri yang" zain: khyoo:
yo".



6. Lhid" zo" to" da" soug" jen moo xo' lho: moomyid:
daloem: bui" sho' yo" lhid" gu: myid soin: lho: lhid" we'.

Goonham' voogung daloem: moo mang: byo, ga: su:
dayug nyid. Nyang: gi _____

